

Spirare ZRT³ Nozzlenub Moisture Management System

Greyabbey Housing Northern Ireland

The houses at Greyabbey were identified as having a long standing issue with dampness, thus this was seen as a good case study project. The houses at Greyabbey were two bed roomed end terraces, built around 1900, with solid brick walls. The houses had been empty for a number of years but were recently extensively renovated

- ▣ October 2008 the Spirare Moisture Control System was installed in houses in Belfast, Northern Ireland. These houses were of solid 400 mm thick brick walls and were saturated with moisture.
- ▣ The houses were re-surveyed after installation of the ZRT³ Nozzlenub and on four separate occasions these houses have shown that the ZRT³ NozzleNub have stopped the moisture from rising into the walls and the walls are now drying out.
- ▣ As can be seen in the thermal images (Fig 1 & 2) below the ZRT³ Nozzlenub has uniformly dried out the wall

Economical benefits of the ZRT3 Moisture Management System

As you can see in fig 1 and 2 the ZRT3 Nozzlenub moisture management system has dramatically reduced the moisture content in the walls, and is uniformly drier. These houses are now available to let and provide an income rather than an ongoing cost. There is a triple bottom line saving as the system can be installed by generalists, be installed quicker and have a positive social effect

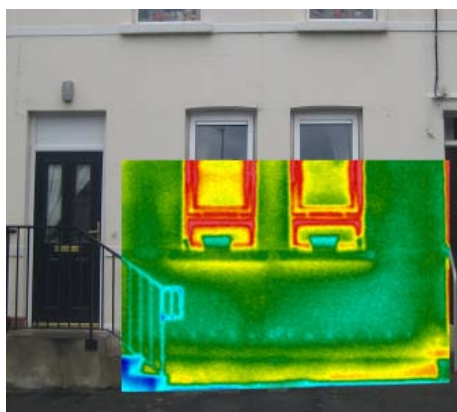


Fig 1

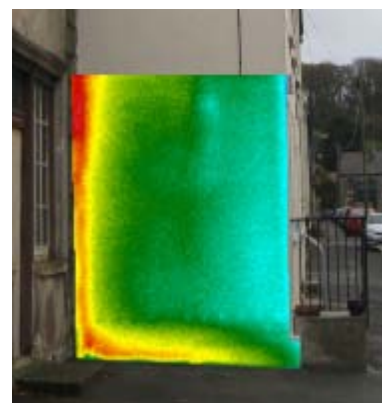


Fig 2